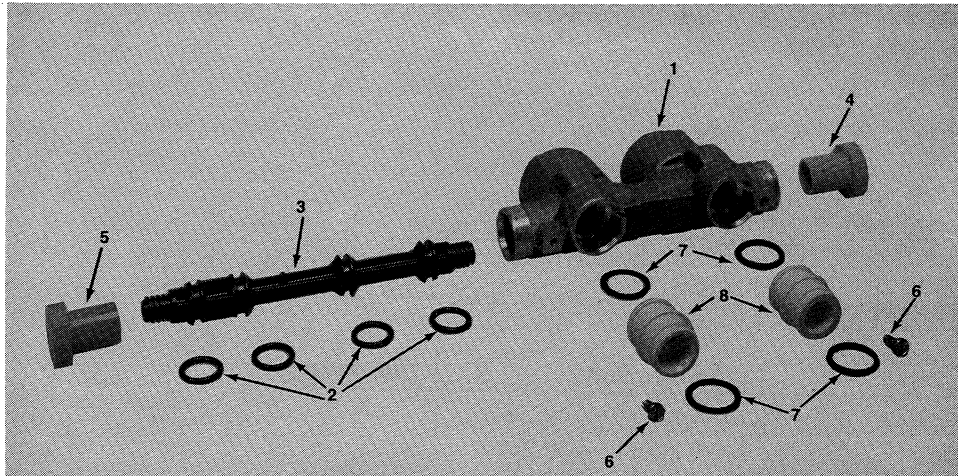


1971-1990 INSTALLATION KIT PARTS

CUL-FLO-VALV[®] BYPASS KIT



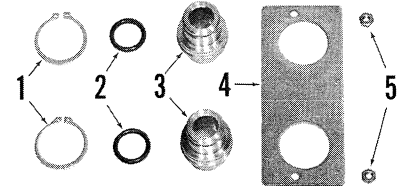
Code	Catalog No.	Description	Qty. Reqd.
The following items are used on ALL Cul-Flo-Valv bypasses:			
(1)	_____	Body*	—
(2)	00-3084-26	O-Ring	4
(3)	00-4832-11	Stem - Less O-Rings	1
(4)	00-4834-13	Knob - "Push for Soft Water" (Blue)	1
(5)	00-4034-23	Knob - "Push to Bypass" (Red)	1
The following items are used only on bypasses designed to mount directly to a tank bracket:			
(6)	00-3185-46	Screw (All Culligan [®] Mark Series and similiar style hydraulic and Power Valve controls)	2
(6)	00-4443-00	Screw (brass motorized valve, 1977-1983, only)	2
(7)	00-3084-27	O-Ring	4
(8)	00-3306-67	Coupling	2

*Not available for sale. Replace with suitable complete bypass valve assembly. See the Components and Accessories section for complete bypass assembly listings.

1971-1990 INSTALLATION KIT PARTS (Continued)

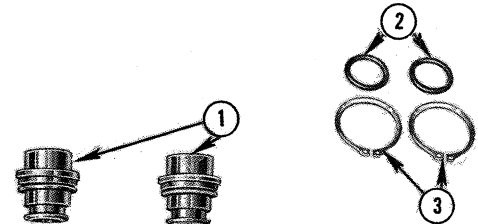
SWEAT ADAPTER KIT [40 (49) & 412 SOFTENERS, AUTO. CULLSORB® & FILTR-CLEER® FILTERS 1978-83]

Code	Catalog No.	Description	Qty. Reqd.
(1)	00-3307-82	Retainer Ring	2
(2)	00-3044-11	O-Ring	2
(3)	00-3308-31	Adapter, 3/4-inch	2
	00-3308-31	Adapter, 1-inch	
(4)	00-5642-03	Plate	1
(5)	00-3183-50	Nut	2



SWEAT ADAPTER KIT

Code	Catalog No.	Description	Qty. Reqd.
(1)	00-3301-83	Brass Adapter Fitting - 3/4-inch Sweat	2
(1)	00-3308-31	Brass Adapter Fitting - 1-inch Sweat	2
(2)	00-3044-11	O-Ring	2
(3)	00-3307-82	Retainer Ring	2



SWEAT ADAPTER KIT (N8_{T.M.} CUSTOM, 1987-TO DATE, AND NORTHBROOK_{T.M.} 1978-87 WATER CONDITIONERS)

Code	Catalog No.	Description	Qty. Reqd.
(1)	00-4403-50	Nut	2
(2)	00-4403-48	Fitting, Sweat	2
(3)	00-4403-49	Gasket	2

